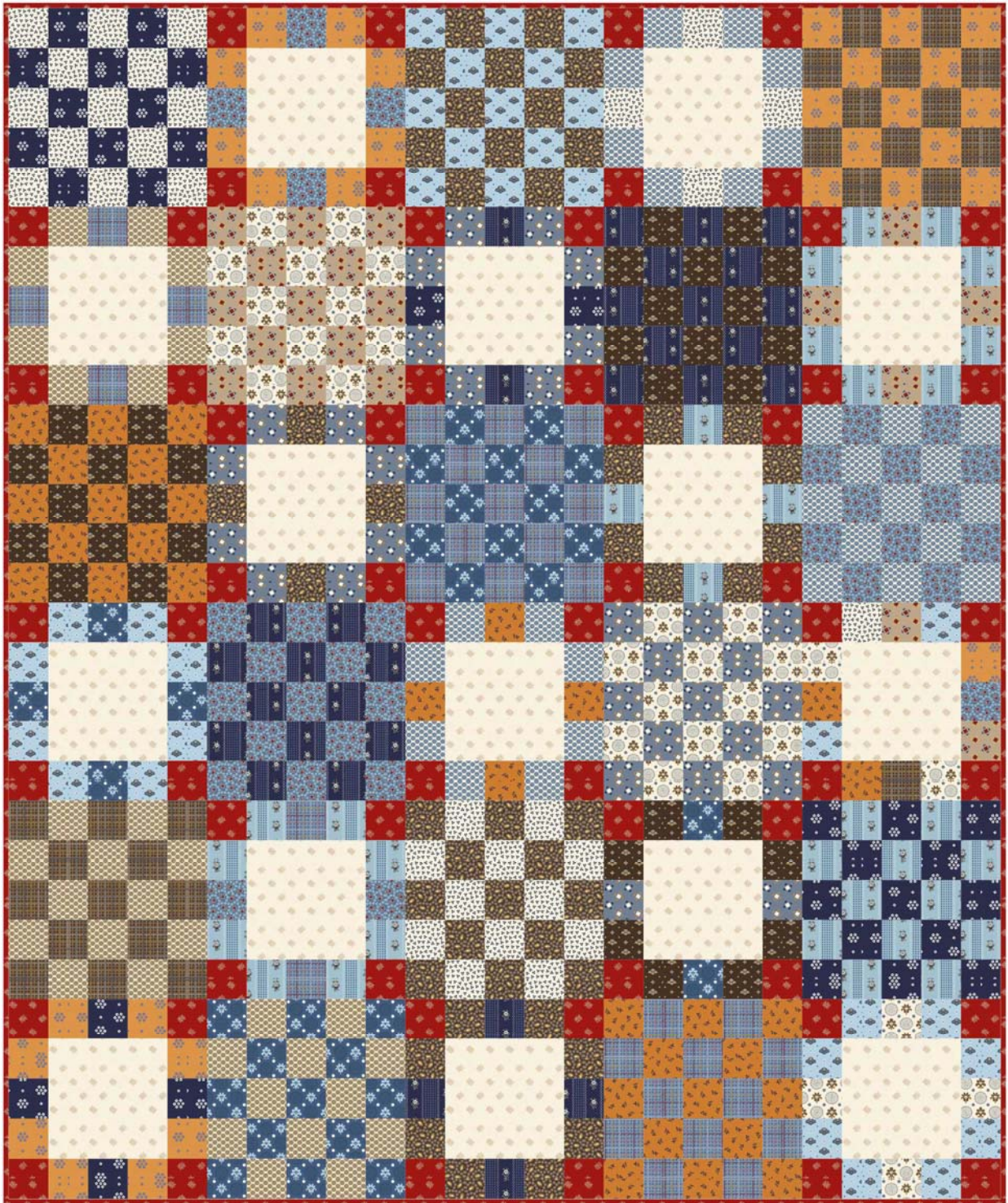
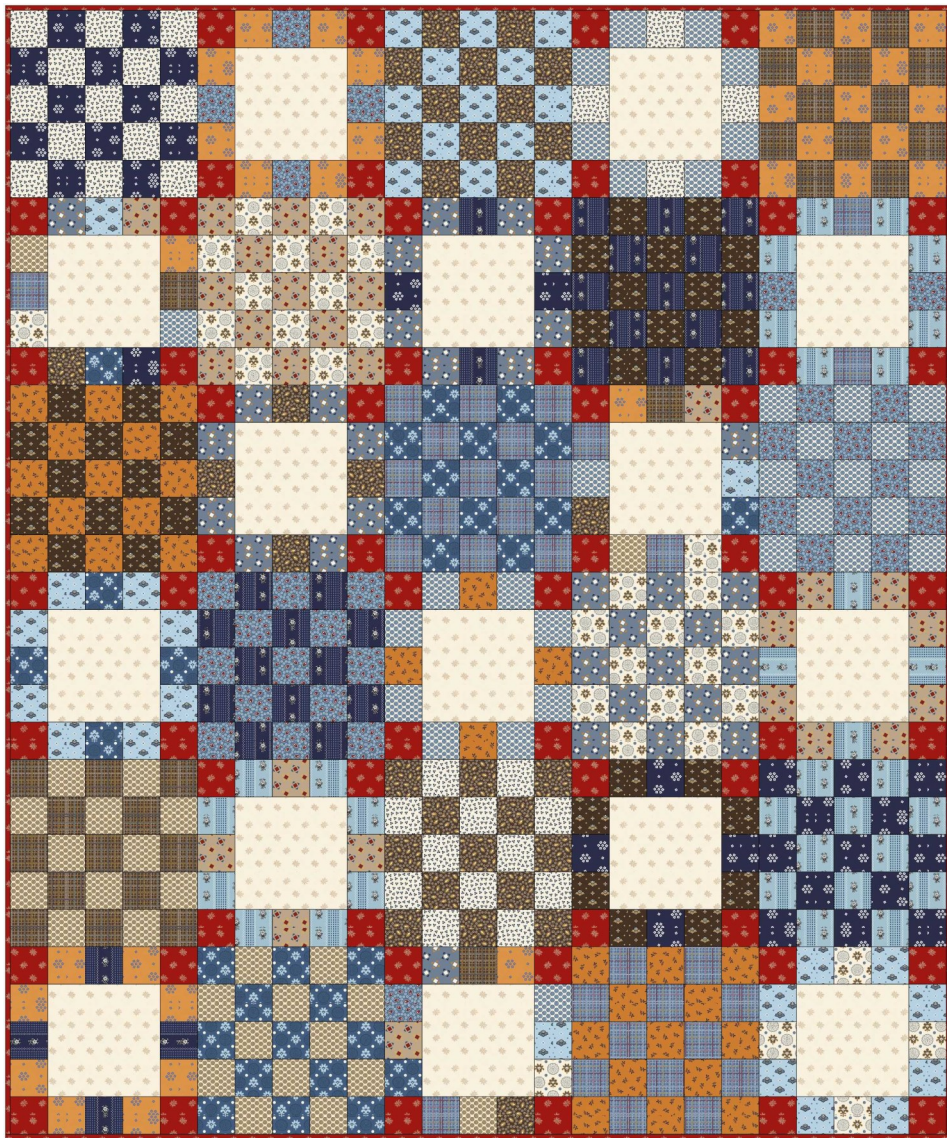


# Favorite Fibers

Fabric and Quilt by Sheryl Johnson of Temecula Quilt Co.



Approx 50" x 60"



temeculaquiltco.com | @temeculaquiltco | Temecula CA | Temecula Quilt Co

## Favorite Fibers

Finished Quilt 50 1/2" x 60 1/2"

### Fabric Requirements

One 2 1/2" strip precut of Favorite Fibers

5/8 yard Butterfly R310561 Cream

5/8 yard Butterfly R310561 Red

3 yards | backing

## Cutting

From each 2 1/2" strip, cut: 16 squares, 2 1/2" x 2 1/2"  
(you do not need to cut the two cream butterfly strips)

From red butterfly print, cut:

2 strips, 2 1/2" x 42" subcut 30 squares, 2 1/2" x 2 1/2"  
6 strips 2 1/4" x 42" | binding

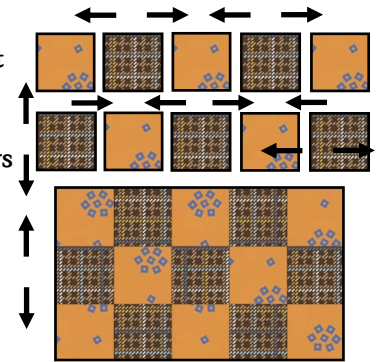
From cream butterfly print, cut:

3 strips, 6 1/2" x 42" subcut 15 squares, 6 1/2" x 6 1/2"

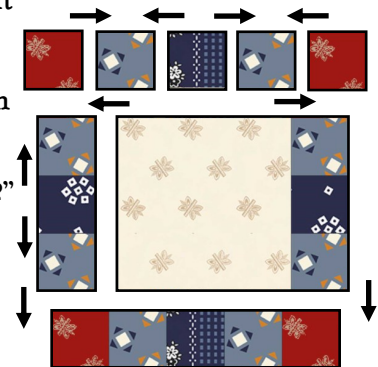
## Making the Blocks

*Press seams in direction indicated by arrows*

1. Using diagram for fabric placement layout  
15 Checkerboard blocks in five rows of five squares. Sew the units into rows. Join the rows alternating seams at intersections. Make 15 Checkerboard blocks measuring 10 1/2" square, including seam allowances.



2. Using diagram for fabric placement layout  
15 frame blocks. Sew units in top and bottom border into rows placing a red square in each corner. Join three squares together to create side borders. Add side borders to center 6 1/2" cream square. Add top and bottom rows to create a block that measure 10 1/2" square, including seam allowances.



3. Layout quilt top in six rows of five blocks. Sew the blocks into rows. Join the rows alternating seams at intersections.

4. Quilt as desired, bind and enjoy!