



KAFFE
FASSETT
COLLECTIVE
for

Free Spirit

Floral Medallion Quilt

Featuring February 2023 by Kaffe Fassett
Collective

Fussy-cutting adds a frame-like flair to this easy design, and big bold prints from Kaffe's latest collection create instant impact in this quilt!

Collection:	February 2023 by Kaffe Fassett Collective
Technique:	Pieced
Skill Level:	Advanced Beginner
Finished Size:	58" x 62" (147.32cm x 157.48cm)

All possible care has been taken to assure the accuracy of this pattern. We are not responsible for printing errors or the manner in which individual work varies. Please read the instructions carefully before starting this project. If kitting, it is recommended a sample is made to confirm accuracy.

Project designed by Kaffe Fassett | Tech edited by Alison M. Schmidt

Fabric Requirements

DESIGN	COLOR	ITEM ID	YARDAGE
(A) Beaded Curtain	Pastel	PWGP191.PASTEL	2 yards (1.83m)
(B) Carpet Cookies	Grey	PWGP192.GREY	1 yard (0.91m)
(C) Funky Flora	Grey	PWBM011.GREY	$\frac{3}{4}$ yard (0.69m)
(D) Floral Burst	Cool	PWPJ029.COOL	$\frac{5}{8}$ yard (0.57m)
(E) Climbing Geraniums	Contrast	PWPJ110.CONTRAST	$\frac{5}{8}$ yard (0.57m)
(F) Fish Lips	Contrast	PWBM007.CONTRAST*	$\frac{5}{8}$ yard (0.57m)
(G) Twig	Grey	PWGP196.GREY	$\frac{1}{4}$ yard (0.23m)

* includes binding

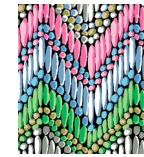
Backing (Purchased Separately)

44" (1.12m) wide

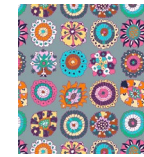
Disks	Grey	PWGP193.GREY	4 yards (3.66m)
OR			
108" (2.74m) wide			
Climbing Geraniums	Contrast	QBPJ002.CONTRAST	$1\frac{7}{8}$ yards (1.71m)

Additional Recommendations

- 100% cotton thread in colors to match
- 66" x 70" (1.68m x 1.78m) batting



(A)



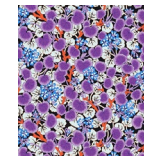
(B)



(C)



(D)



(E)



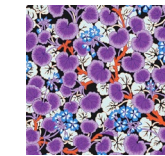
(F)



(G)



Backing
44"



Backing
108"



Floral Medallion Quilt

WOF = Width of Fabric

Notes:

The border cut lengths listed are based on an accurate ¼" seam allowance. You may wish to only cut WOF strips, then measure and trim each border to fit when ready to sew it to the quilt center.

Refer to the quilt image for aligning fussy-cut pieces, or spotlight motifs of your own choice. Label cut pieces with fabric letters for easier construction.

Fabric A, fussy cut:

(4) 10½" x WOF for outer borders, aligning the 10½" section along the same repeated motif for each cut. Reserve any remaining yardage in case additional sections are needed for matching the fabric repeats if piecing the side borders to additional lengths.

Fabric B, fussy cut:

(4) identical 10½" squares, centered on the same nine motifs

Fabric C, cut:

(4) 5½" x WOF; sub-cut
(2) 5½" x 38½" top/bottom borders
(2) 5½" x 32½" side borders

Fabric D, fussy-cut:

(1) 16½" x 20½" rectangle, centered on a fabric print section of your choice

Fabric E, cut:

(4) 4½" x WOF; sub-cut
(2) 4½" x 28½" top/bottom borders
(2) 4½" x 24½" side borders

Fabric F, cut:

(7) 2½" x WOF for binding

Fabric G, cut:

(2) 2½" x WOF; sub-cut
(4) 2½" x 20½" borders

Instructions

Note: All seam allowances are ¼" (.64cm) and pieces are sewn right sides together. Press the seam allowances open, unless otherwise indicated.

Quilt Top Assembly

1. Sew (1) 2½" x 20½" **Fabric G** border to each long edge of the **Fabric D** rectangle. Press. Sew one of the remaining **Fabric G** borders to the top edge, and the other to the bottom edge of the rectangle. Press.
2. Sew (1) 4½" x 24½" **Fabric E** border to each long edge of the quilt center. Press. Sew one 4½" x 28½" **Fabric E** border to the top edge, and the other to the bottom edge of the quilt center. Press.
3. Sew (1) 5½" x 32½" **Fabric C** border to each long edge of the quilt center. Press. Sew one 5½" x 38½" **Fabric C** border to the top edge, and the other to the bottom edge of the quilt center. Press.

4. Referring to the **Quilt Layout** (page 4), arrange the 10½" x WOF **Fabric A** outer borders around the outer edges of the quilt center. Position each border so that the fabric print radiates outward from the quilt center and the zigzag motif matches as closely as possible at each corner. Cut (2) 10½" x 38½" outer top/bottom borders from the WOF strips and set aside. The outer side borders should measure 42½" long -if necessary piece to lengthen or to match motifs, cut additional 10½" x WOF sections from the remaining yardage, and sew the new sections and borders together end-to-end, matching repeats. Press. Cut (2) 10½" x 42½" outer side borders. Sew one side border to either side of the quilt center. Press.
5. Sew (1) 10½" **Fabric B** square to each end of the outer top/bottom borders, rotating each square so that the same motif appears at the inner corner of each seam. Press. Sew one outer top/bottom border to the upper edge, and the other to the lower edge of the quilt center to complete the quilt top. Press.

Finishing

6. Sew together the 2½" **Fabric F** binding strips end-to-end using diagonal seams. Press the seams open. Press the binding strip in half wrong sides together.

Floral Medallion Quilt

7. Layer the backing (wrong side up), batting, and quilt top (right side up). Baste the layers together and quilt as desired. Trim the excess batting and backing even with the quilt top after quilting is completed.
8. Leaving an 8" tail of binding, sew the binding to the quilt top through all layers, matching all raw edges. Miter corners. Stop approximately 12" from where you started. Lay both loose ends of binding flat along quilt edge. Where these two loose ends meet, fold them back on themselves and press to form a crease. Using this crease as your stitching line, sew the two open ends of the binding together right sides together. Trim seam to 1/4" and press open. Finish sewing binding to quilt.
9. Turn the binding to the back of the quilt and hand stitch in place.

