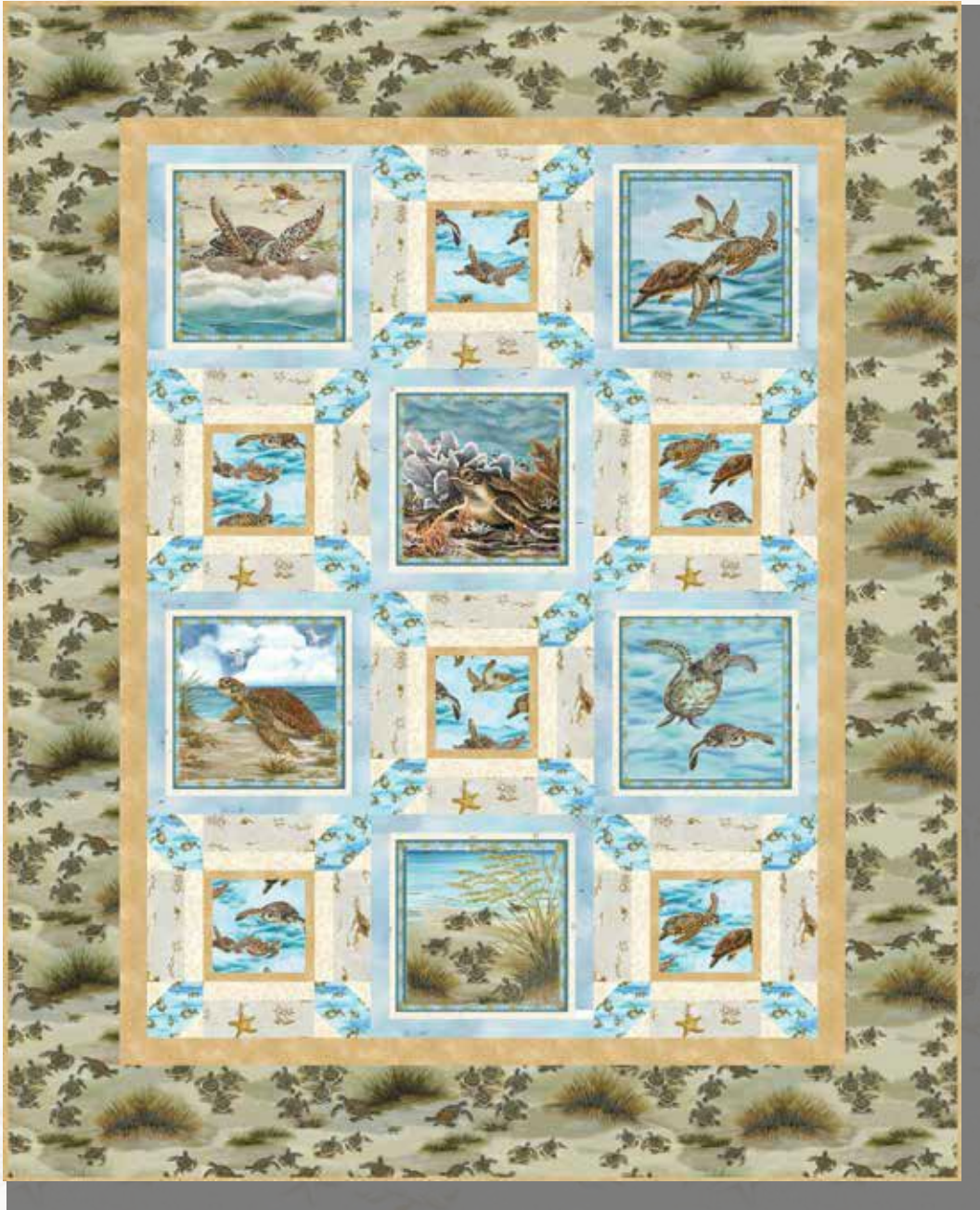


Turtle March

- A Free Project Sheet
- **NOT FOR RESALE**

By Lisa Marie Sparling

Quilt Design by Heidi Pridemore



Quilt 2

Skill Level: Advanced Beginner

 Henry Glass & Co., Inc.



[facebook](#)

Finished Quilt Size: 51" x 63"
(129.54 cm x 160.02 cm)

49 West 37th Street, New York, NY 10018

tel: 212-686-5194 fax: 212-532-3525

Toll Free: 800-294-9495

www.henryglassfabrics.net

Please check our website for pattern updates before starting this project.

Turtle march Quilt 2

Finished Quilt Size: 51" x 63"
(129.54 cm x 160.02 cm)

Fabrics in the Collection



Seagulls Flying
Sky Blue – 1139-11



Tossed Ferns
Cream – 1140-31



Small Turtles
Sky Blue – 1141-11



Starfish
Sand – 1142-31



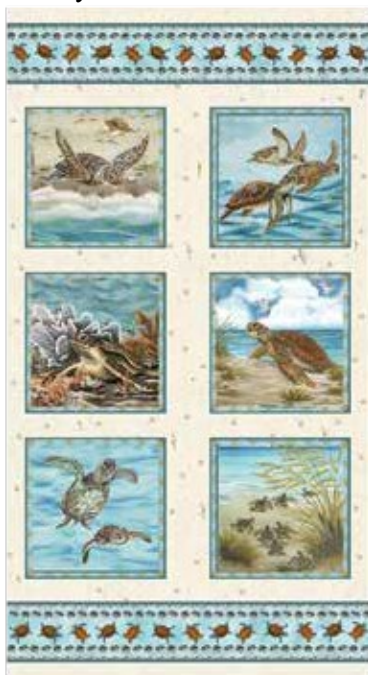
Large Turtles
Sky Blue – 1143-11



Bale of Turtles
Sand – 1144-31



Cloud Texture
Sky Blue – 1145-11



Continuous Blocks
Cream – 1146-44



24 Inch Panel
Sky Blue – 1147P-11

Select Fabrics from
Folio Basics



Off White
7755-04



Chamois
7755-31



Aqua
7755-76

Materials

2/3 yard (0.61m)	Continuous Blocks - Cream (A)	1146-44
1/2 yard (0.46m)	Folio Basics - Off White (B)	7755-04
1/2 yard (0.46m)	Cloud Texture - Sky Blue (C)	1145-11
1/4 yard (0.23m)	Large Turtles - Sky Blue (D)	1143-11
1 yard (0.92m)	Folio Basics - Chamois (E)	7755-31*
3/8 yard (0.35m)	Starfish - Sand (F)	1142-31
1/3 yard (0.31m)	Small Turtles - Sky Blue (G)	1141-11
1 1/2 yards (1.38m)	Bale of Turtles - Sand (H)	1144-31
3 1/3 yards (3.05m)	Tossed Ferns - Cream (Backing)	1140-31

*Includes binding

Cutting Instructions

Please note: All strips are cut across the width of fabric (WOF) from selvage to selvage unless otherwise noted.

From the Continuous Blocks - Cream (A):

- Fussy cut (6) 10 1/2" squares, each centered on a block.

From the Folio Basics - Off White (B), cut:

- (3) 2" x WOF strips. Sub-cut (48) 2" squares.
- (4) 1 1/2" x WOF strips. Sub-cut (24) 1 1/2" x 6 1/2" strips.

From the Cloud Texture - Sky Blue (C), cut:

- (3) 2" x WOF strips. Sub-cut (12) 2" x 10 1/2" strips.
- (4) 2" x WOF strips. Sub-cut (12) 2" x 13 1/2" strips.

From the Large Turtles - Sky Blue (D), cut:

- (1) 5 1/2" x WOF strip. Sub-cut (6) 5 1/2" squares.

From the Folio Basics - Chamois (E), cut:

- (3) 2" x WOF strips. Sew the strips together end to end with diagonal seams and cut (2) 2" x 48 1/2" strips.
- (2) 2" x 39 1/2" WOF strips.
- (2) 1 1/2" x WOF strips. Sub-cut (12) 1 1/2" x 5 1/2" strips.
- (3) 1 1/2" x WOF strips. Sub-cut (12) 1 1/2" x 7 1/2" strips.
- (6) 2 1/2" x WOF strips for the binding.

From the Starfish - Sand (F), cut:

- (4) 2 1/2" x WOF strips. Sub-cut (24) 2 1/2" x 6 1/2" strips.

From the Small Turtles - Sky Blue (G), cut:

- (2) 3 1/2" x WOF strips. Sub-cut (24) 3 1/2" squares.

From Bale of Turtles - Sand (H), cut:

- (2) 6 1/2" x 51 1/2" (length of fabric) LOF strips.
- From the remaining fabric, cut (2) 6 1/2" x 51 1/2" WOF strips, piece as needed.

From the Tossed Ferns - Cream (Backing), cut:

- (2) 59" x WOF strips for the backing. Sew the strips together and trim to make the 59" x 71" back.

Block Assembly

Note: The arrows in figures represent the fabric print direction. Pay attention to the fabric and unit orientations when assembling the various components. Use a 1/4" seam allowance with right sides together (RST) unless otherwise noted.

1. Sew (1) 2" x 10 1/2" Fabric C strip to each side of (1) 10 1/2" Fabric A square. Sew (1) 2" x 13 1/2" Fabric C strip to the top and to the bottom of the Fabric A square to make (1) Block One square (Fig. 1). **Trim the block to measure 12 1/2" x 12 1/2"**. Repeat to make (6) Block One squares total.

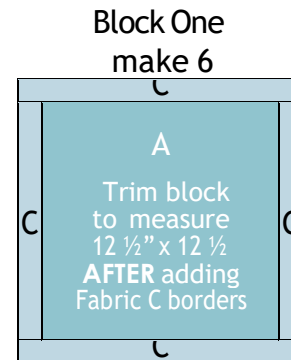


Fig. 1

2. Sew (1) 1 1/2" x 5 1/2" Fabric E strip to each side of (1) 5 1/2" Fabric D square. Sew (1) 1 1/2" x 7 1/2" Fabric E strip to the top and to the bottom of the Fabric D square. Trim the block to measure 6 1/2" x 6 1/2" to make (1) Unit 1 square (Fig. 2). Repeat to make (6) Unit 1 squares total.

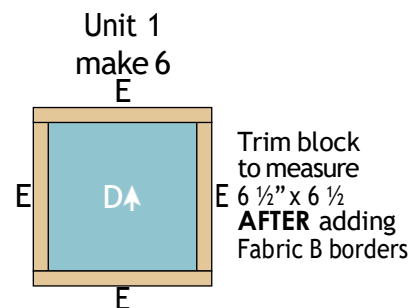


Fig. 2

3. Sew (1) 2 1/2" x 6 1/2" Fabric F strip to the top of (1) 1 1/2" x 6 1/2" Fabric B strip lengthwise to make (1) Unit 2 strip (Fig. 3). Repeat to make (24) Unit 2 strips total.

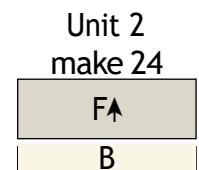
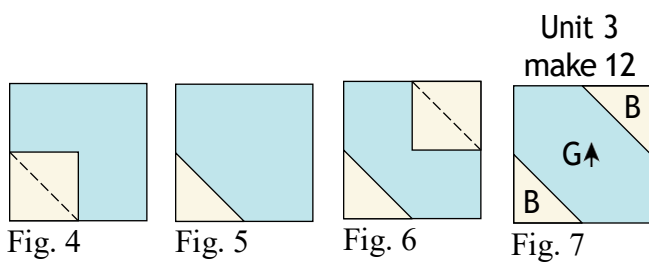


Fig. 3

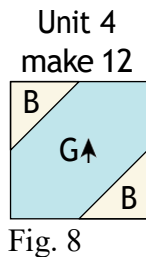
4. Place (1) 2" Fabric B square on the bottom left corner of (1) 3 1/2" Fabric G square, right sides together (Fig. 4). Sew across the diagonal of the smaller square from the upper left corner to the lower right corner (Fig. 4). Flip open the triangle formed and press. Trim away the excess fabric from behind the triangle 1/4" away from the sewn seam (Fig. 5).

5. Follow Figure 6 for the seam direction to add a 2" Fabric B square to the upper right corner of the 3 1/2" Fabric G square to make (1) Unit 3 square (Fig. 7).

6. Repeat Steps 4-5 to make (12) Unit 3 squares total.



7. Repeat Steps 4-5 and refer to Figure 8 for fabric identification, placement, seam direction and orientation to make (12) Unit 4 squares.



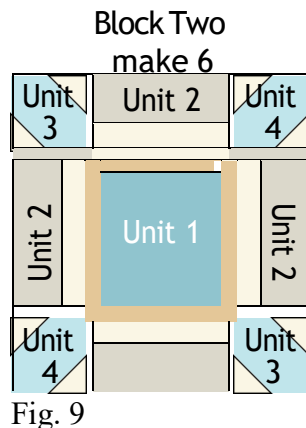
8. Sew together (1) Unit 3 square, (1) Unit 2 strip and (1) Unit 4 square, in that order from left to right, to make the top row (Fig. 9).

9. Sew (1) Unit 2 strip to each side of (1) Unit 1 square to make the middle row (Fig. 9).

10. Sew together (1) Unit 4 square, (1) Unit 2 strip and (1) Unit 3 square, in that order from left to right, to make the bottom row (Fig. 9).

11. Sew together the (3) rows from Steps 8-10 lengthwise to make (1) 12 1/2" Block Two square (Fig. 9).

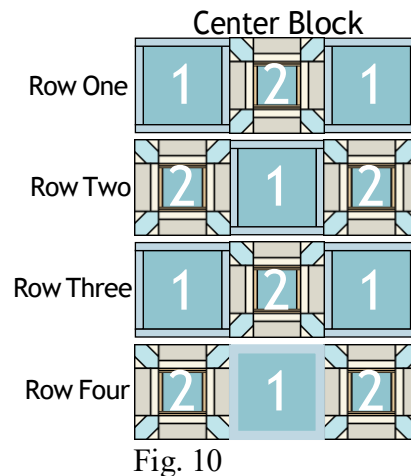
12. Repeat Steps 8-11 to make (6) Block Two squares total.



13. Sew (1) Block One square to each side of (1) Block Two square to make Row One (Fig. 10). Repeat to make Row Three.

14. Sew (1) Block Two square to each side of (1) Block One square to make Row Two (Fig. 10). Repeat to make Row Four.

15. Sew together the (4) pieced Rows, in numerical order from top to bottom, to make the 36 1/2" x 48 1/2" Center Block (Fig. 10).



Quilt Top Assembly

(Follow the Quilt Layout while assembling the quilt top.)

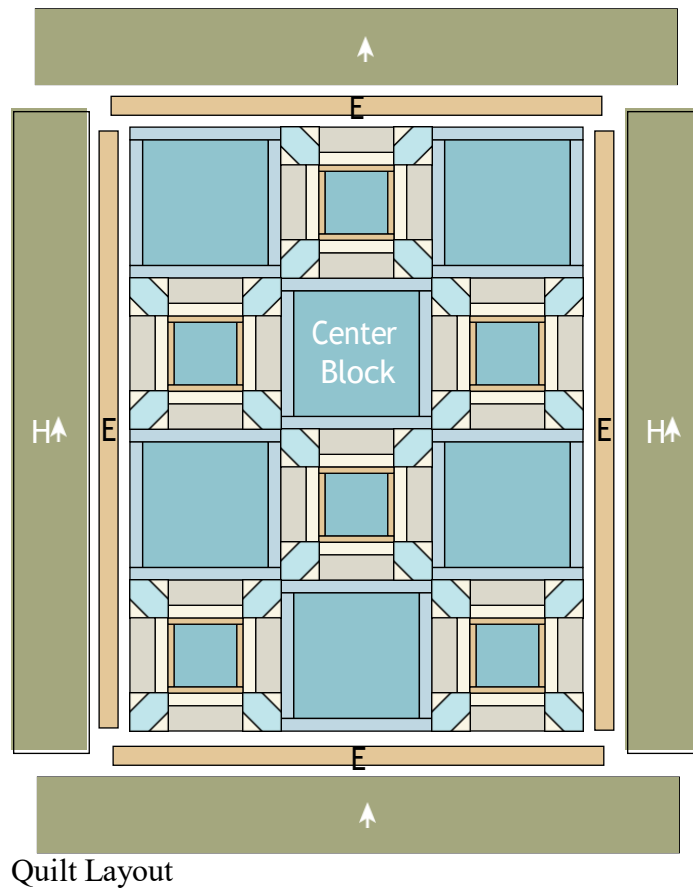
16. Sew (1) 2" x 48 1/2" Fabric E strip to each side of the Center Block. Sew (1) 2" x 39 1/2" Fabric E strip to the top and to the bottom of the Center Block.

17. Sew (1) 6 1/2" x 51 1/2" Fabric H LOF strip to each side of the Center Block. Sew (1) 6 1/2" x 51 1/2" Fabric H WOF strip to the top and to the bottom of the Center Block to make the quilt top.

18. Layer and quilt as desired.

19. Sew the (6) 2 1/2" x WOF Fabric E strips together, end to end with 45-degree seams, to make the binding. Fold this long strip in half lengthwise with wrong sides together and press.

20. Bind as desired.



Quilt Layout

Every effort has been made to ensure that all projects are error free. All the information is presented in good faith, however no warranty can be given nor results guaranteed as we have no control over the execution of instructions. Therefore, we assume no responsibility for the use of this information or damages that may occur as a result. When errors are brought to our attention, we make every effort to correct and post a revision as soon as possible. Please make sure to check www.henryglassfabrics.net for pattern updates prior to starting the project. We also recommend that you test the project prior to cutting for kits. Finally, all free projects are intended to remain free to you and are not for resale.